



EFG Open Conference on Rights Clearance

Amsterdam, 30 May 2011

Ad Pollé

EYE Film Institute Netherlands

IPR Management & Administration Status and perspectives

Initial Situation: Why a European Film Gateway?

- Growing number of digitisation projects and repositories of digital collections
 - Need for a registry of collections, items and film-specific authority files on a trans-institutional, trans-national level
- Lack of common standards for database & record structures suitable for the needs of film archives
 - Need for common interoperability standards
- *Flickr, YouTube* etc. influence user expectations, digital libraries initiatives are on their way
 - Challenge for film archives to go along
- Lack of knowledge and best practices when it comes to dealing with IPR issues in the context of web-based access
 - Need to join experiences

The European Film Gateway Project

- The EFG Project was initiated by the Association des Cinémathèques Européennes and the Europeana Foundation
- EFG a Best Practice Network funded by the European Commission under the eContent*plus* programme
- The project started in September 2008 and will end in August 2011
- Main project outcome is the web portal “European Film Gateway”, expected to be publicly available in early summer 2011
- 16 European film archives and cinematheques contribute content to EFG, 5 further partners complete the EFG consortium

Project Goals and Objectives




- Build a „digital showcase“ for collections in European film archives and cinematheques
 - Films and film clips (esp. non-fiction)
 - Images: posters, stills and set photos, designs and drawings etc.
 - Text material: reviews, correspondence, censorship and rating visa etc.
- Create a central access point to federated digital collections and repositories
- Agree on common interoperability standards for film archives and cinematheques
- Best practices for rights' clearance and IPR management of cinematographic works
- Link Europe's film archives and cinematheques with Europeana

The EFG Consortium

Contributing Archives

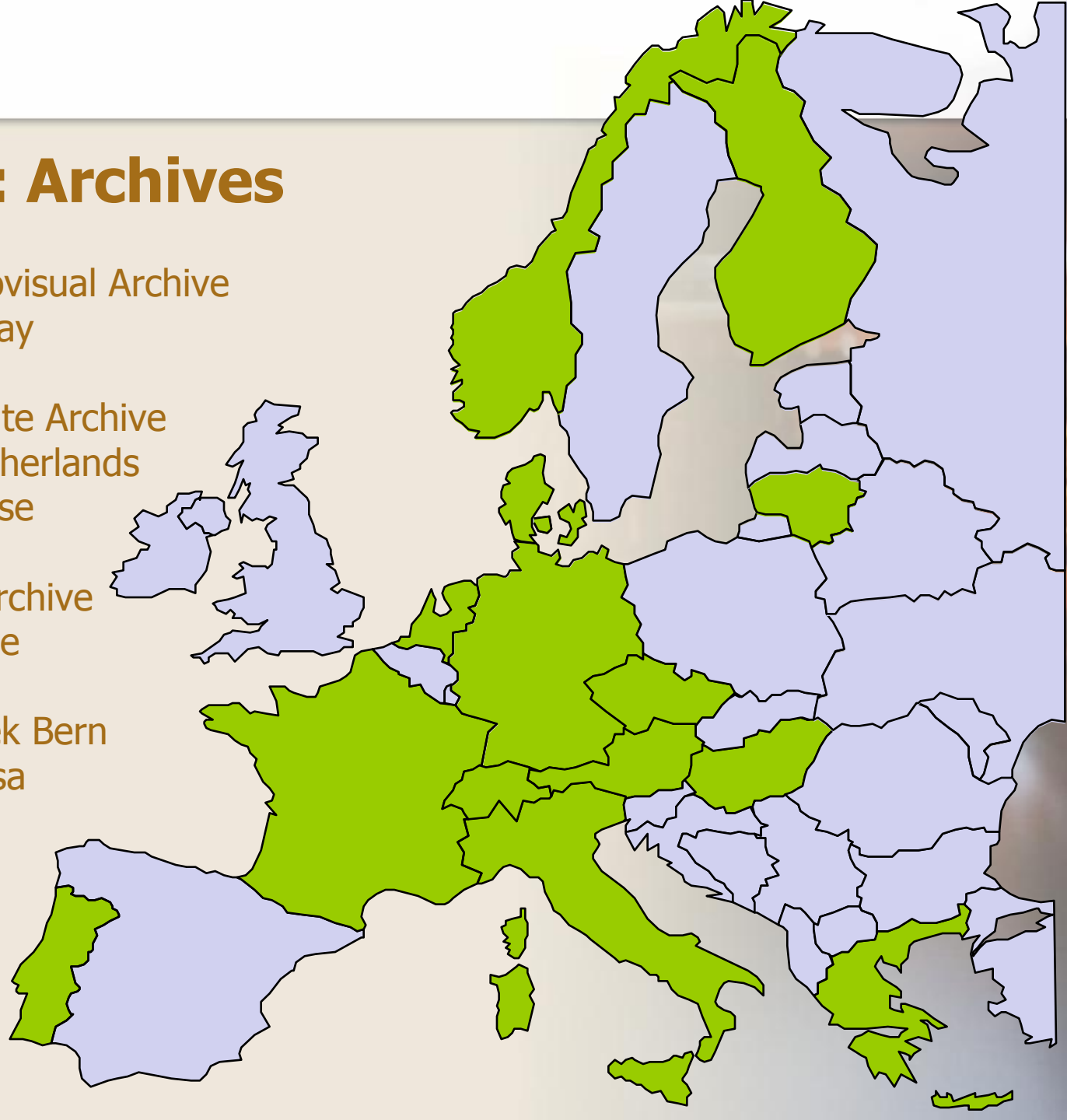
Deutsches Filminstitut – DIF (coordinator)	Frankfurt	
Cinemateca Portuguesa – Museu do cinema	Lisbon	
Cineteca di Bologna	Bologna	
Det Danske Filminstitut	Copenhagen	
EYE Filminstituut Nederland	Amsterdam	
Filmarchiv Austria	Vienna	
Filmoteka Narodowa (associated partner)	Warsaw	
Kansallinen audiovisuaalinen arkisto	Helsinki	
La Cinémathèque française	Paris	
Lichtspiel - Kinemathek Bern	Bern	
Lietuvos Centrinis Valstybės Archyvas	Vilnius	
Cinecittà Luce	Rome	
Magyar Nemzeti Filmarchívum	Budapest	
Národní filmový archiv	Prague	
Nasjonalbiblioteket	Oslo	
Tainiothiki tis Ellados	Athens	

Providers of Infrastructures, Services, and Technologies

Association des Cinémathèques Européennes	Frankfurt/Brussels	 
Europeana Foundation	The Hague	
Eremo srl	Cupramontana	
FernUniversität in Hagen	Hagen	
CNR-ISTI	Pisa	
reelport GmbH	Cologne	

Consortium: Archives

Finnish National Audiovisual Archive
National Library Norway
Danish Film Institute
Lithuanian Central State Archive
EYE Film Institute Netherlands
Cinémathèque française
Deutsches Filminstitut
Czech National Film Archive
Hungarian Film Archive
Filmarchiv Austria
Lichtspiel - Kinemathek Bern
Cinemateca Portuguesa
Cineteca di Bologna
Cinecittà Luce
Greek Film Archive



Consortium: Archives

Finnish National Audiovisual Archive

National Library Norway

Danish Film Institute

Lith

New associated partner:

EYE

Filmoteka Narodowa, Warsaw

Cine

Deu

Cze

Hungarian Film Archive

Filmarchiv Austria

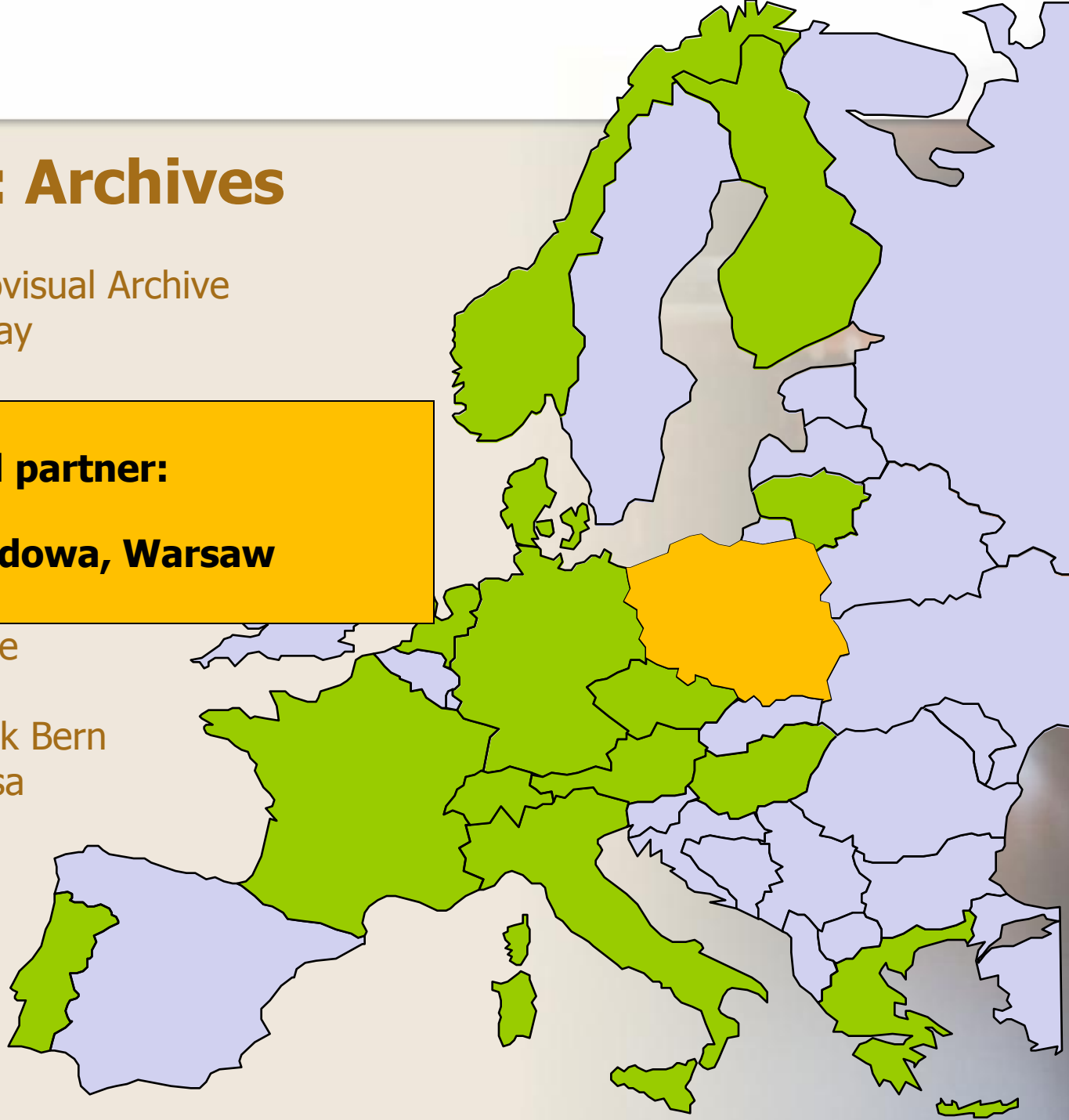
Lichtspiel - Kinemathek Bern

Cinematca Portuguesa

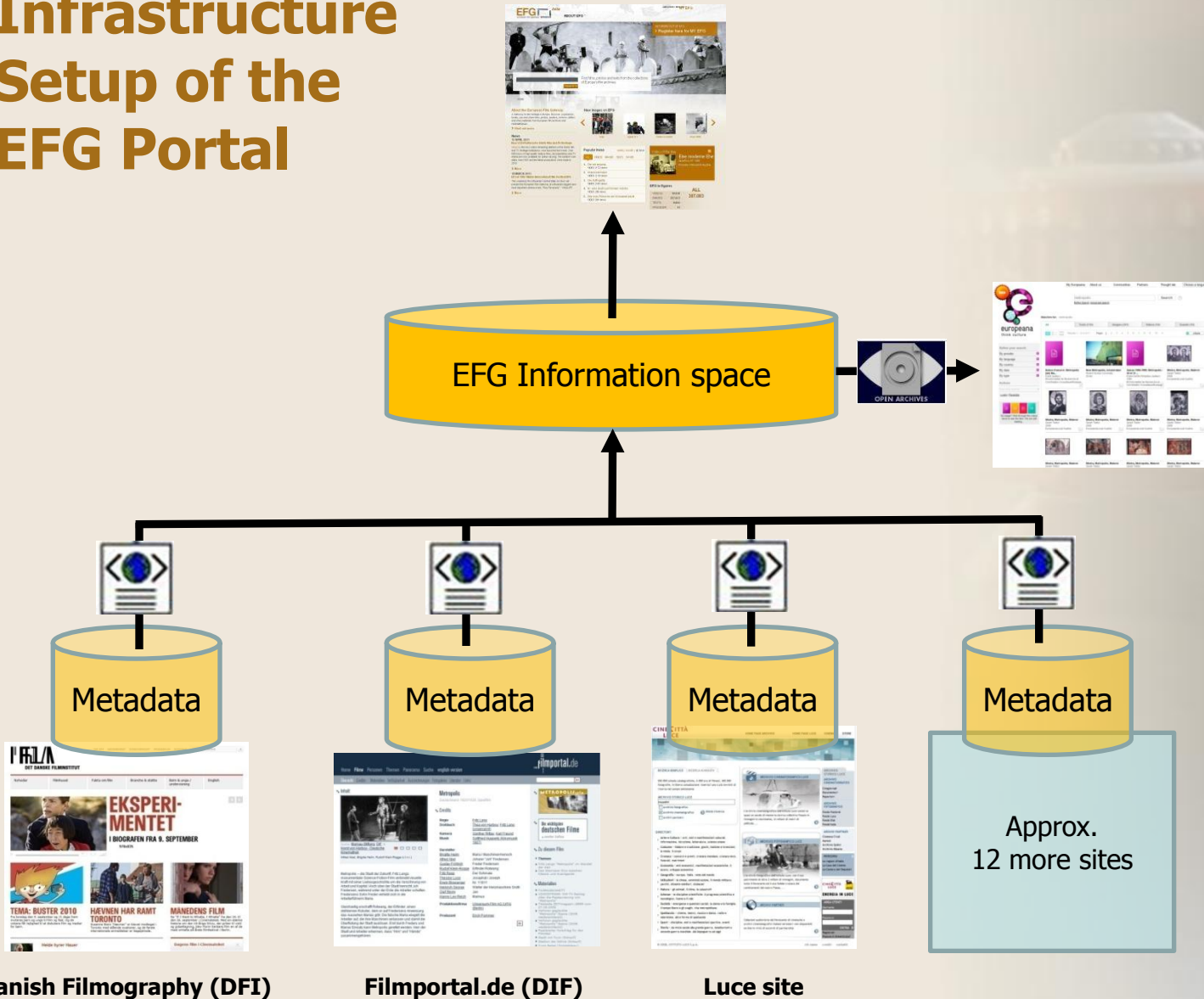
Cineteca di Bologna

Cinecittà Luce

Greek Film Archive



Infrastructure Setup of the EFG Portal

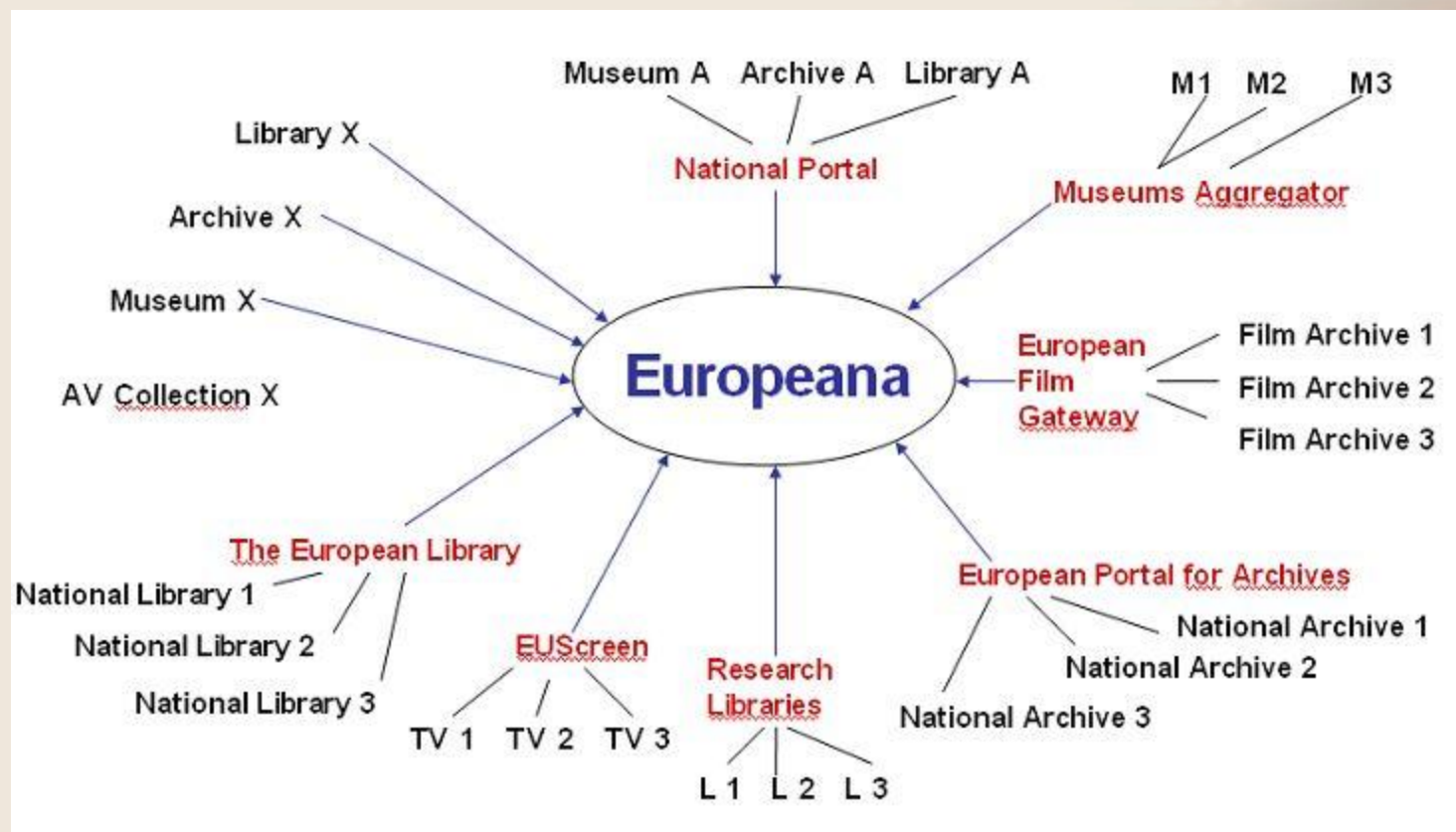


Danish Filmography (DFI)

Filmportal.de (DIF)

Luce site

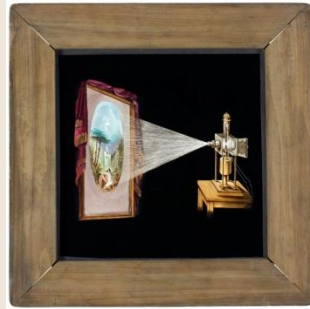
EFG as Aggregator for Europeana



Content: What can be found on the EFG?

- **80 % images**
 - film stills, set photos, posters, laterna magica slides, set and costume designs, advertising material etc.
- **> 10 % videos**
 - mainly newsreels, early fiction films, documentaries, advertising and travel films etc.
- **< 10 % texts**
 - early censorship documents, rare books from the pre-cinema era, periodicals, correspondence, production papers, screenplays etc.

Although the EFG presents content from the 17th century till today, the majority of the material dates from the first half of the 20th century.



Facts about the EFG

- Public launch in early summer 2011
- Until August 2011 it will showcase almost 600.000 items from the digital collections of 16 European film archives
- Will be available in 14 European languages
- Every document presented on the EFG will also be searchable via www.europeana.eu